






TABLE OF CONTENTS


1	Introduction.....	3
1.1	General	3
1.2	 Activating Plan Layout.....	3
1.3	Plan Views and Plan Parts.....	4
2	Plan layout.....	4
2.1	 Creating a new Plan View	4
2.1.1	Page Properties of a Plan View	5
2.1.2	Visible Categories of a Plan View	6
2.2	 Adding a New Plan Part to the Plan	7
2.3	 Adding an Existing View as a Plan Part	7
2.4	 Deleting an Active Plan Part	8
2.5	Scale of Plan Parts/ Removing Scaling	9
2.6	Enlarging / Reducing / Repositioning Plan Parts.....	9
2.7	Visibilities in Plan Parts	9
2.8	Editing Plan Views with Other Functions	10
2.9	Refreshing Views and Plan Parts.....	10
2.10	Zooming and Scrolling in Plan Views and Plan Parts.....	10

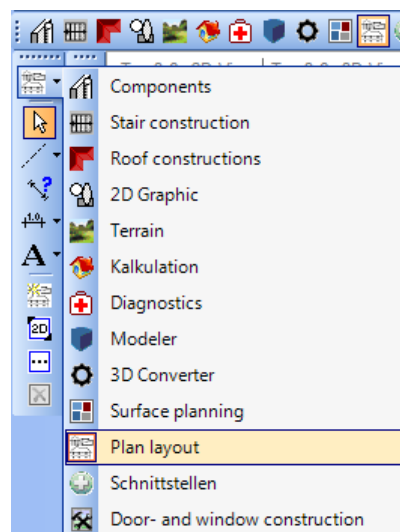
1 INTRODUCTION

1.1 GENERAL

The plan layout plug-in provides functions for the layout, design and presentation of plans and drawings. As a fully integrated plug-in, it uses the current project data and construction details directly, and is not independent of the model of the building.

1.2 ACTIVATING PLAN LAYOUT

As a plug-in, plan layout is integrated in the plug-in toolbar in the software, from which it can be selected with the  button. Since plan layout provides an extended view it requires that a project is open, otherwise the button is deactivated.



After the plug-in has been selected, the functions for plan layout are displayed in the vertical toolbar below the general functions.



1.3 PLAN VIEWS AND PLAN PARTS

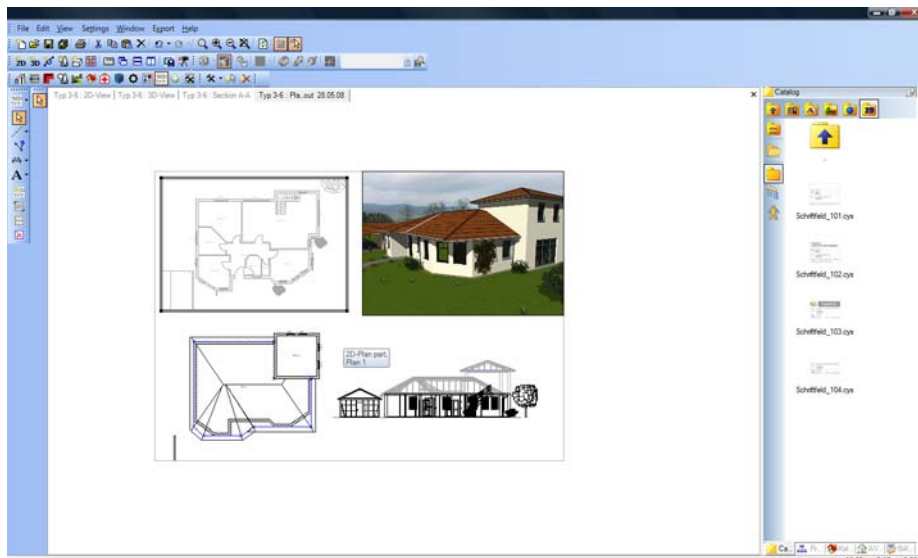
Plan views differ from conventional views in that they can contain several views - so called plan parts. Plan Parts represent 'normal' views, from which they are a copy.

Plan views and plan parts also possess different properties. In a plan view the plan view itself or one of the parts can be active. Active plan parts are indicated by a frame with corners, which can be used to reposition or change the size of the plan part.

If a plan part is active, actions such as zooming, scrolling or changing properties only apply to this part in the plan view. If no plan part is active then these actions apply to the entire plan view.

Note: Closing a plan view corresponds to closing a view in the software, i.e. the view no longer exists and cannot be restored. All components, such as the layout of plan parts, the use of 2D elements such as images and text blocks, are no longer valid.

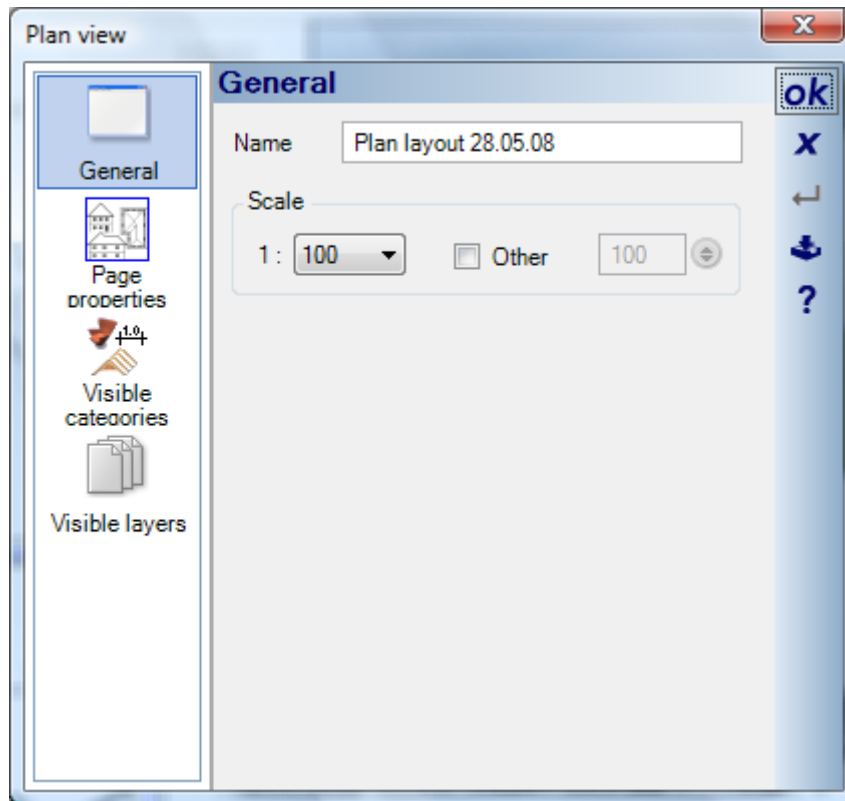
The following illustration shows a plan view with an active plan part.



2 PLANLAYOUT

2.1 CREATING A NEW PLAN VIEW

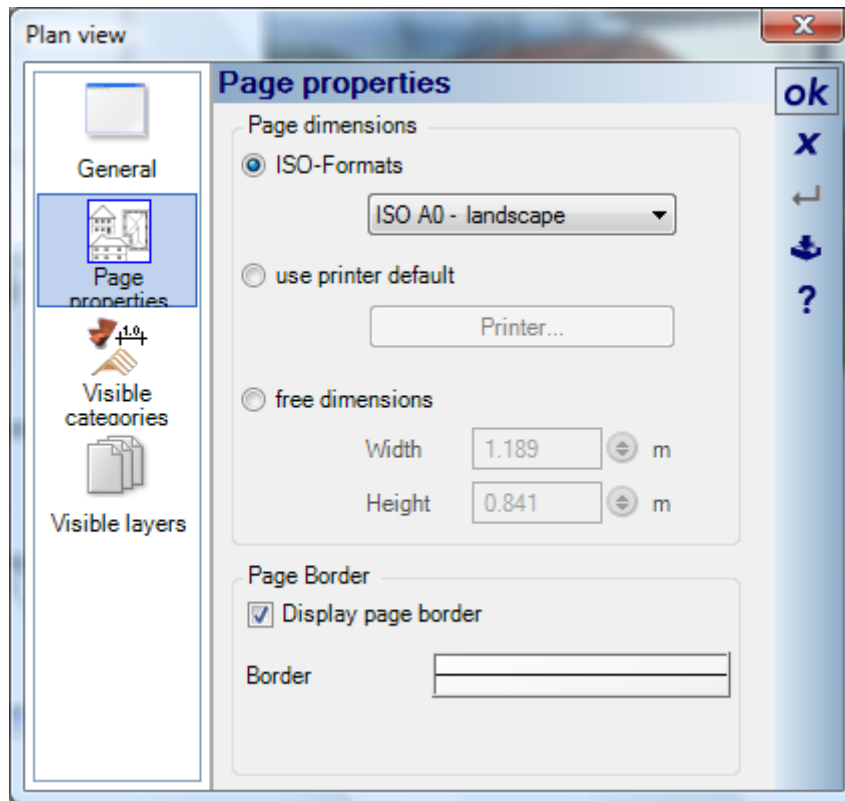
A new plan view is created by clicking on the  button. First the properties dialog appears.



Under 'General' you can allocate a name and specify the scale of the plan view. The scale of the plan view has no effect on the scale of the plan parts. You can therefore create a plan view with a scale of 1:100 and insert into it parts having a different scale.

2.1.1 Page Properties of a Plan View

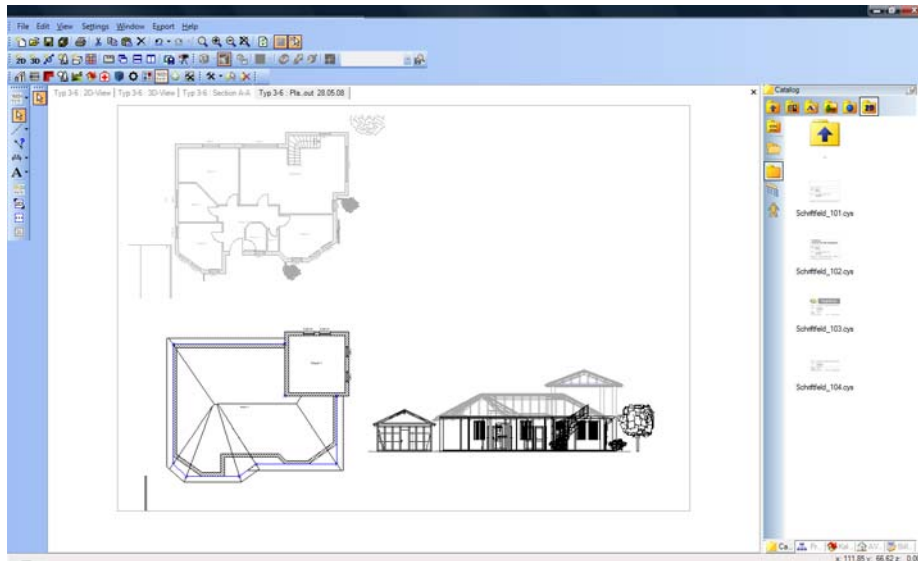
Under 'Page Properties' you can specify the format of the plan view and optionally define the printing of a page border which can be used for orientation purposes.



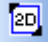
2.1.2 Visible Categories of a Plan View

The visible categories of a plan view are defined in the same way as in the standard software. These categories have no effect on the visibilities of the individual Plan Parts, which are specified for each part independently.

If for example you deactivate the 2D graphic elements in the plan view shown previously, only the text block and the inserted image are no longer visible .

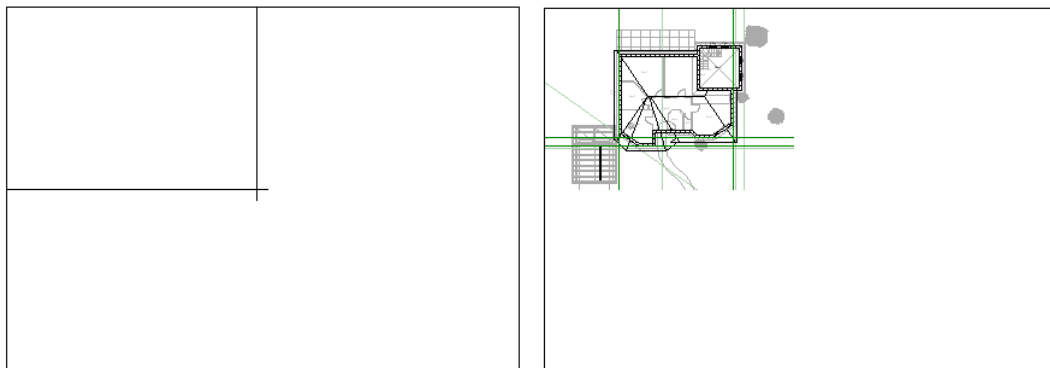


2.2 ADDING A NEW PLAN PART TO THE PLAN

The  button activates the function to insert a new plan part in the plan, using the mouse to define a rectangle which determines the dimensions and position of the new part.


A second mouse-click results in a complete 2D top view of the current project with all its components being inserted into the new plan part.

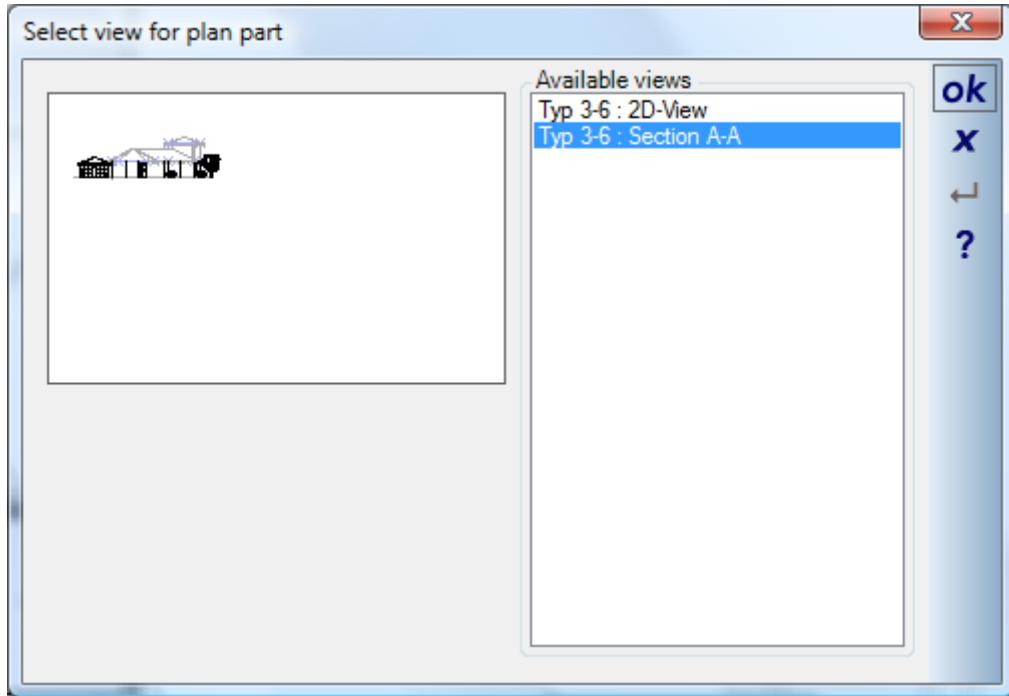
The following illustration shows on the left the insertion of the part, and on the right the result for a particular project after the rectangle has been defined.



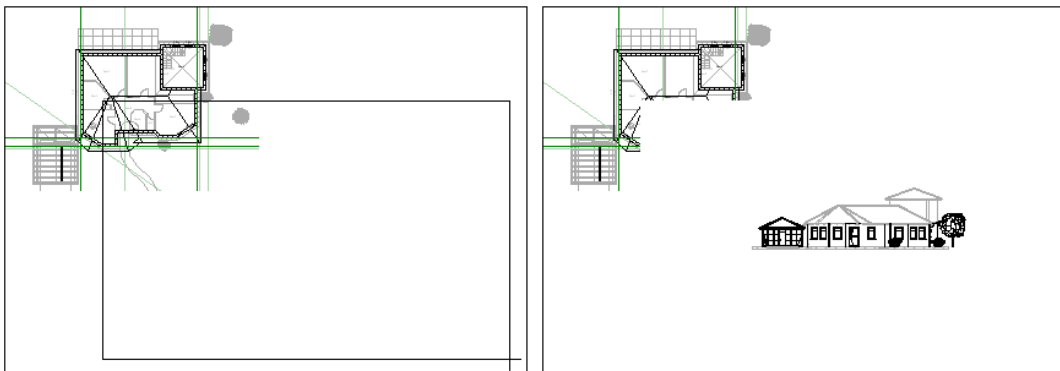
2.3 ADDING AN EXISTING VIEW AS A PLAN PART

Unlike new plan parts, when an existing view is inserted all its current visibilities are taken into account. Existing views can also be cross sections, whereas in a new plan part only 2D top views are allowed.

A click on the  button activates the dialog in which the desired view can be selected.




A list of all 2D top views and cross sections which exist for the project, and a preview of the selected view, is presented here. After exiting from the dialog with 'OK', the part is attached to the cursor and can be positioned as required in the plan view. The dimensions of the part are by default those of the original view. On positioning the plan part the reference point can be changed in the usual way with 'Ctrl+w'.




The size of the partition can be modified subsequently if necessary.

2.4 DELETING AN ACTIVE PLAN PART

If a plan part is active in the plan view, indicated by a border surrounding it, then it can be deleted using the  button.

2.5 SCALE OF PLAN PARTS/ REMOVING SCALING

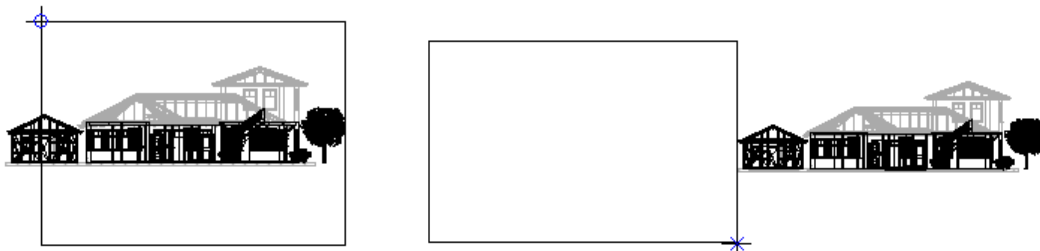
Basically all plan parts in the plan are shown to scale. This also means that generally zooming is not possible in a plan part.

However, by deactivating the 'Keep scale' feature, the view within a plan can be enlarged or reduced in size. The  option must be deactivated in the properties dialog for the plan part, which can be activated over the context menu opened with a right mouse-click. In this way the contents of plan parts can be used, which would otherwise not fit onto a page because of their dimensions and scale.

2.6 ENLARGING / REDUCING / REPOSITIONING PLAN PARTS

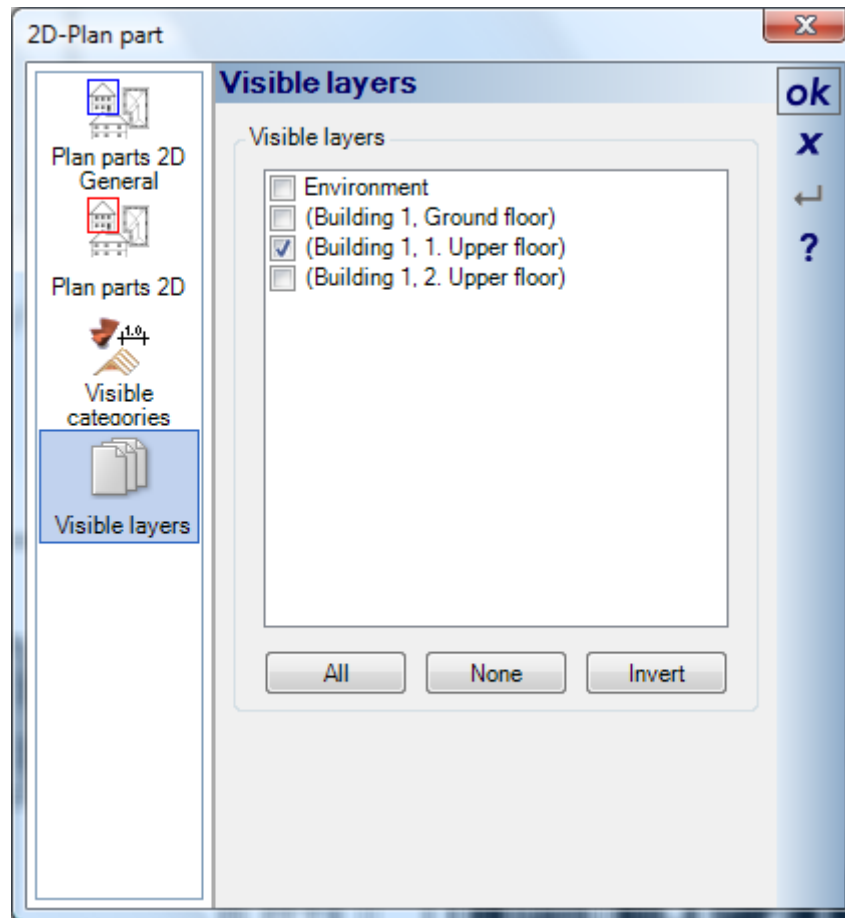
If a plan part is active it can be repositioned or its size changed using its rectangular border. Move the cursor to one of the corners of the rectangle until the appropriate cursor function is shown.

The cursor functions conform to the standard Windows functions for Enlarging / Reducing / Repositioning a window. A left mouse-click starts the desired action. The new size or the new position of the part is again indicated by a rectangle. A further left mouse-click terminates the action. Only now are the contents of the plan part refreshed, not continuously during the action.



2.7 VISIBILITIES IN PLAN PARTS

As with other views in the software, the visibility of elements within a plan part can be defined using categories or visible layers. The appropriate dialog can be activated over the context menu opened with a right mouse-click when a plan part is active.



2.8 EDITING PLAN VIEWS WITH OTHER FUNCTIONS

Certain standard functions of the software, such as text, guidelines, 2D drawing functions, 2D symbols from the catalog etc., can also be used in plan views. These functions help in the construction and design of the plan and facilitate the insertion of objects such as images, photos or text blocks which are provided in the CAD Software.

2.9 REFRESHING VIEWS AND PLAN PARTS

Plan Parts are copies of views and of the project from which they were generated. Changes to construction or other components in a 'normal' view are automatically incorporated in the Plan Parts.

2.10 ZOOMING AND SCROLLING IN PLAN VIEWS AND PLAN PARTS

Zooming and scrolling in plan views and Plan Parts is performed in the same way as in 'normal' views in the software, however the actions depend on which part of the plan is currently active. If a plan part is active then

zooming and scrolling only apply to this part. If no plan part is active then the actions apply to the entire plan view.

Note: Zooming within a plan part is only possible if the 'Keep scale' option is deactivated.

Further information on zooming and scrolling using key combinations and the mouse wheel can be found in the user guide for the basic version.