

# TABLE OF CONTENT

<b>1</b>	<b>2D-DXF / DWG Import</b> .....	<b>2</b>
1.1	General .....	2
1.2	Starting 2D DXF / DWG Import .....	2
1.3	2D DXF / DWG Import User Interface .....	2
1.4	Inserting an Imported Symbol .....	3
1.5	Properties of Symbols.....	4
1.6	Scaling Symbols in the Plan .....	5
1.7	Saving Imported Symbols .....	6

# 1 2D-DXF/DWG IMPORT

## 1.1 GENERAL

2D-DXF/DWG Import provides functions for importing 2D-DXF and 2D-DWG files with options to select layers defined in a object, and to modify the dimensions of the object. The imported files can be inserted directly as 2D symbols in plans.

The use of components of the Open Design Alliance means that this plug-in can be used under Windows XP or Windows VISTA.

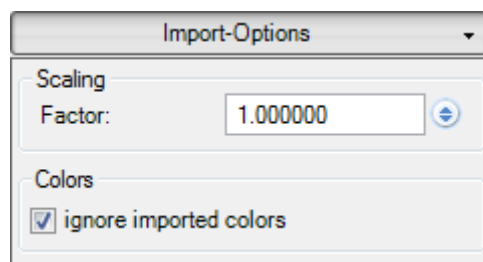
## 1.2 STARTING 2D DXF / DWG IMPORT

DXF/DWG Import is activated over the menu for **File>Import**. The menu entry automatically opens the dialog for 'Open file', in which the file to be imported can be selected.

## 1.3 2D DXF / DWG IMPORT USER INTERFACE

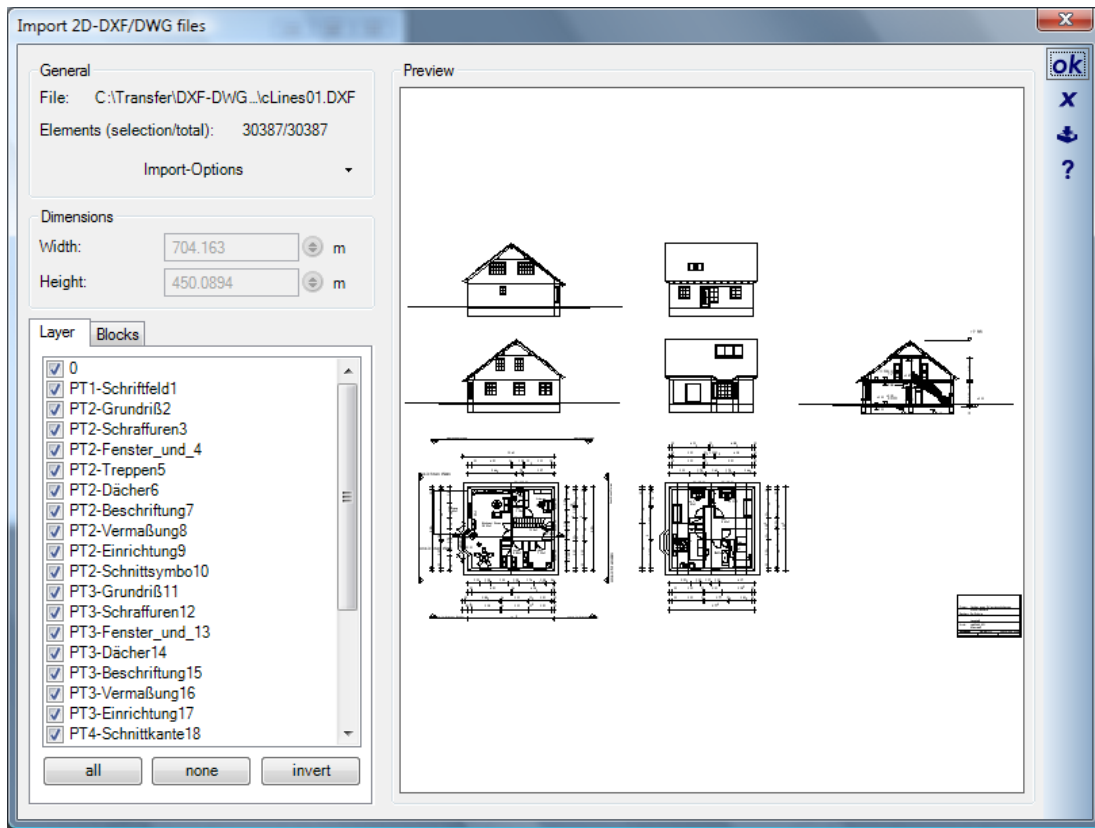
Under 'General' the path and the name of the file being imported are shown, together with the number of 2D elements contained in the file.

The current dimensions of the elements contained in the file can be modified by specifying a scaling factor under 'Import Options'.



Setting the option for 'Ignore imported colours' results in all elements being imported with their colour set as black, irrespective of the properties of the original file.

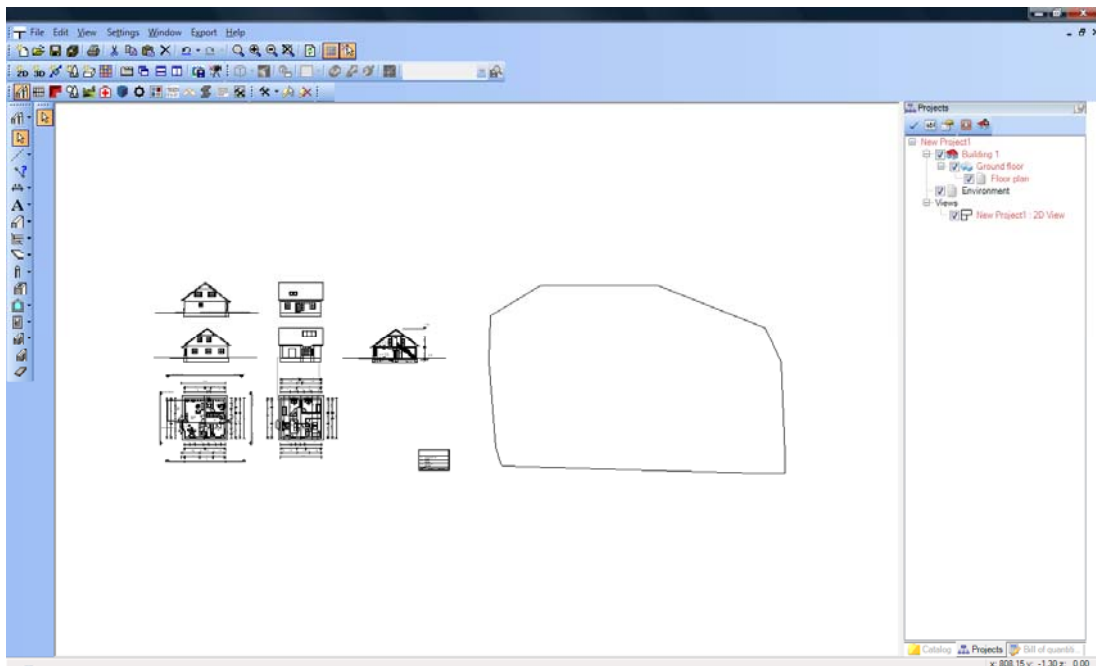
According to the structure of the DXF / DWG file, all layers and blocks are presented in a list from which they can be selected. The content of the import can be restricted by deactivating elements that are not required. The selected elements are shown automatically in the preview.



## 1.4 INSERTING AN IMPORTED SYMBOL

When the 'Import' function is terminated with a click on 'ok', the outline of the symbol is attached to the cursor as a preview. A left mouse-click inserts the symbol into the plan. The positioning of the symbol is only terminated when the 'Esc' key is pressed, or over the context menu activated with a right mouse-click. It is therefore possible to insert as many symbols as required as part of a single import operation.

The following illustration shows on the left a symbol which has been inserted, and to the right of it the preview which is attached to the cursor. The reference point of the symbol attached to the cursor can be changed by pressing 'Ctrl + w'.

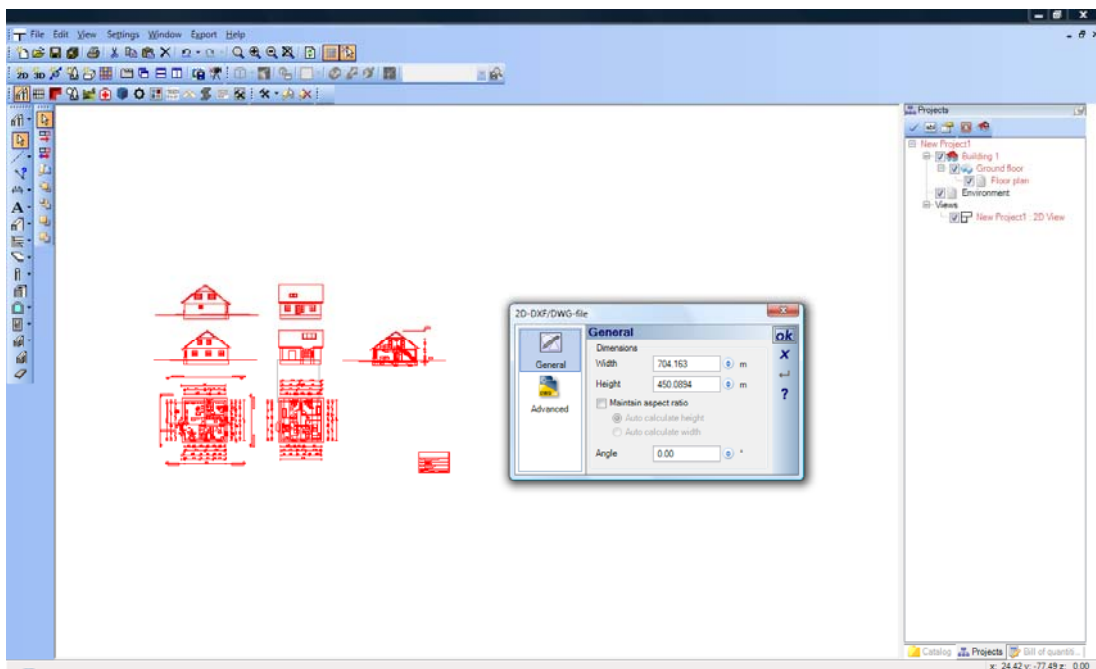


## 1.5 PROPERTIES OF SYMBOLS

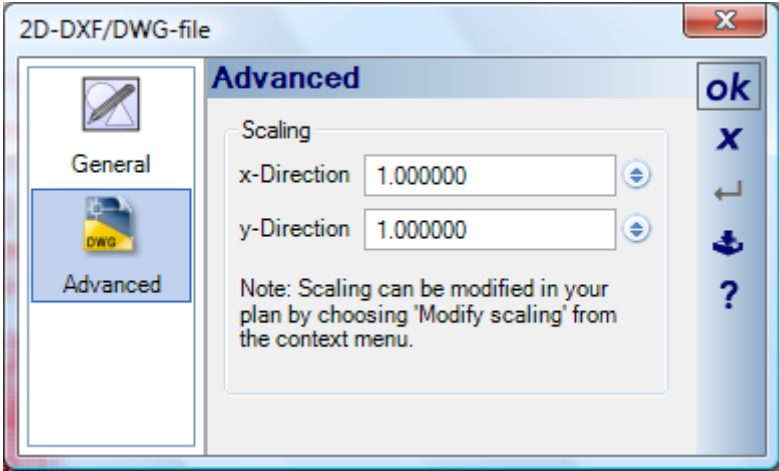
Imported DXF / DWG files are inserted as 2D symbols with extended properties.

The properties dialog is activated by a double-click on the selected symbol or over the context menu opened with a right mouse-click.

The absolute values for the dimensions of a symbol can be changed under 'General' in the properties dialog.



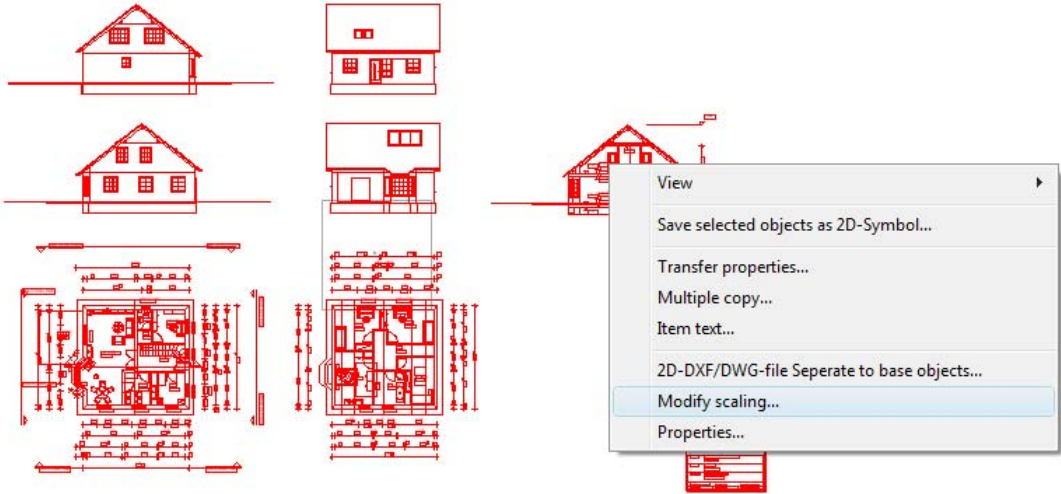
Under 'Advanced' a scaling factor for the symbol in the x and y direction can be specified.



### 1.6 SCALING SYMBOLS IN THE PLAN

An additional possibility for scaling symbols is provided over the context menu opened with right mouse-click when a DXF 2D symbol has been selected.

Input is performed using the mouse to enter 2 points, a start and an end point. These define a length whose value is shown in the 'Adjust scale' dialog. Here you can specify precisely the length required. A click on 'ok' results in the size of the complete symbol being adjusted to reflect the value entered.



## **1.7 SAVING IMPORTED SYMBOLS**

Unlike 'normal' 2D symbols, the symbols imported from DXF / DWG files are saved directly in the project. If it is required that a symbol be available for use in other projects, the file can be saved as a 2D-symbol in the appropriate catalog. This is carried out for a selected symbol over the context menu entry for 'Save selection as symbol file'.